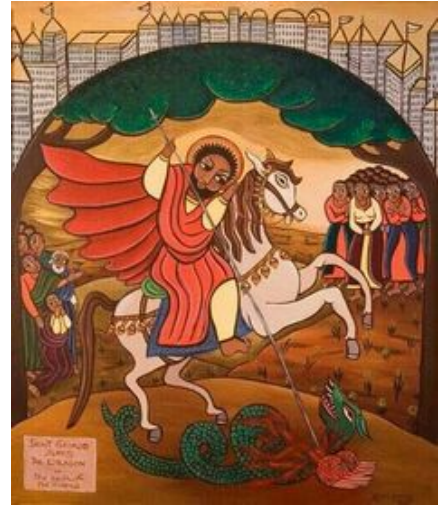


Insight Inspiration Community



The Anthroposophical Society in America honors the **Michael Support Circle**, our major donor circle, providing generous and on-going support toward our shared mission and goals.

The Society strives to weave our movement together in spiritual and practical ways. We support the strength and sustainability of our movement, and depend on the generous gifts of our friends and members to accomplish our shared goals.

Thanks to the 51 individual members, and these organizations, whose gifts support the Anthroposophical Society and our collective efforts in bringing Rudolf Steiner's vision more fully into world, for the future of the world.

- | | |
|---|--|
| ⚙ Anthroposophical Society of Cape Ann | ⚙ Elderberries Café |
| ⚙ Anthroposophy NYC | ⚙ GRADALIS Waldorf Consulting & Services |
| ⚙ Association of Waldorf Schools in North America | ⚙ Great Lakes Branch |
| ⚙ Bay Area Center for Waldorf Teacher Training | ⚙ Heartbeat Lifesharing |
| ⚙ Biodynamic Association | ⚙ High Mowing School |
| ⚙ Camphill School – Beaver Run | ⚙ House of Peace |
| ⚙ Carah Medical Arts | ⚙ Monadnock Waldorf School |
| ⚙ Cedarwood Waldorf School | ⚙ Oakwood Lifesharing |
| ⚙ Center for Anthroposophy in NH | ⚙ RSF Social Finance |
| ⚙ Council of Anthroposophical Organizations | ⚙ Rudolf Steiner College |
| | ⚙ Rudolf Steiner Fellowship Foundation |
| | ⚙ Shining Mountain Waldorf School |

Michael Support Circle gifts help the Society to grow in capacity and viability, providing the basis for increased membership, new learning opportunities, and greater community interaction and engagement. Members pledge gifts of between \$500 and \$5000 per year for five or more years.

Participants in the Michael Support Circle:

- Help lift the work of anthroposophy to a new level in the United States
- Contribute to a sustainable Anthroposophical Society
- Receive discounts on conferences and programs

Contact Deb Abrahams-Dematte at deb@anthroposophy.org or (603) 801-6584 for further information.